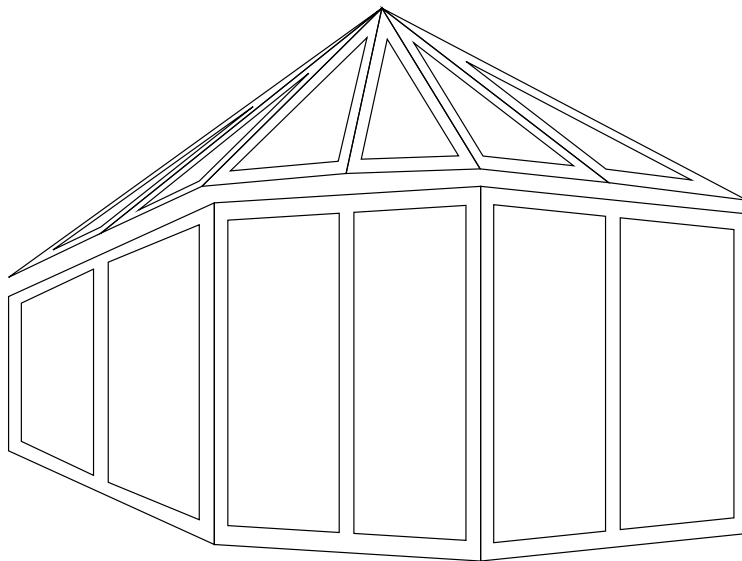


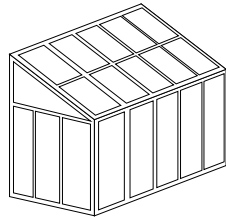


Shades that inspire.

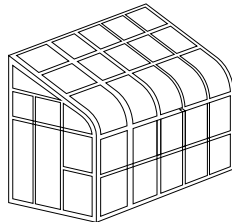
INSTALLATION GUIDE

## Conservatory Rectangle

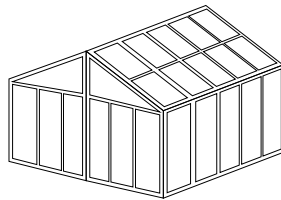




SolaraShade™  
**Straight**



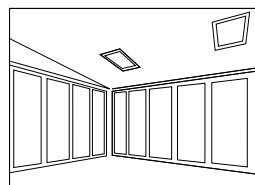
SolaraShade™  
**Curved**



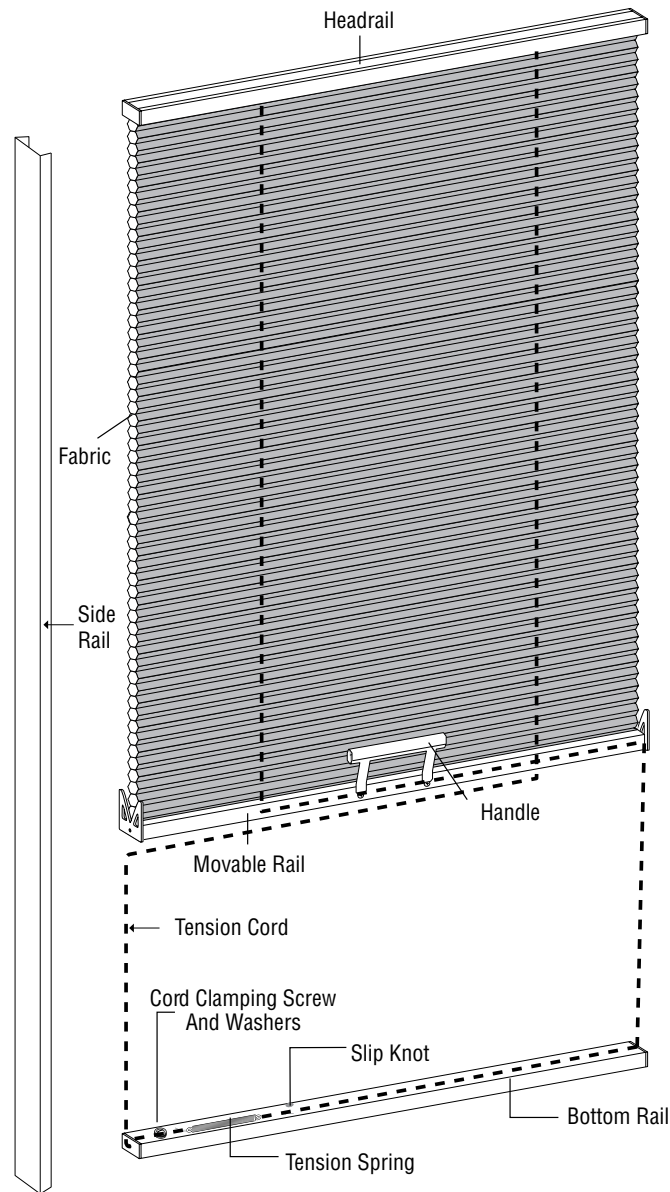
SolaraShade™  
**Cathedral**



SolaraShade™  
**Conservatory**  
Rectangle & Triangle



SolaraSky™  
**Skylight**



Expanded Hardware Diagram

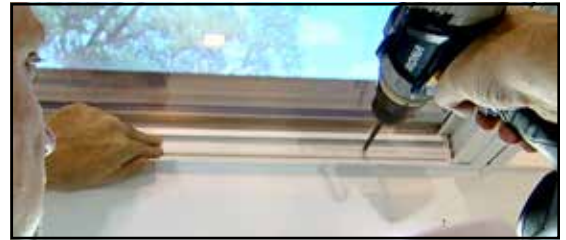
1.) To start, dry fit the track and trim to proper length as required. (Deduct 1/4" off glass opening).



2.) Pull the cross muntin rubber strip. It must be removed, trimmed back and then reinstalled as to not interfere with side tracks.



3.) Install the side track into the glazing bar structure.



4.) Install the special side mount bracket into the headrail.



5.) Install the handle on to the moveable rail.



6.) Slide the shade into the tracks on a diagonal and then click them into the side tracks.



7.) Fasten the top of the shade into the sunroom structure.

➤ *This shows how the shade is attached using the side mount bracket.*

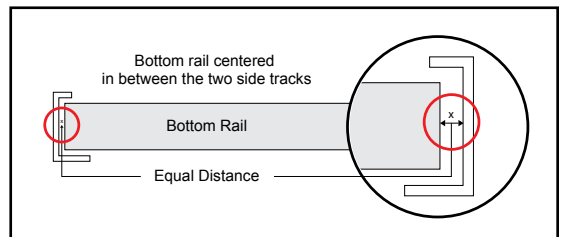


8.) Temporarily remove filler strip.

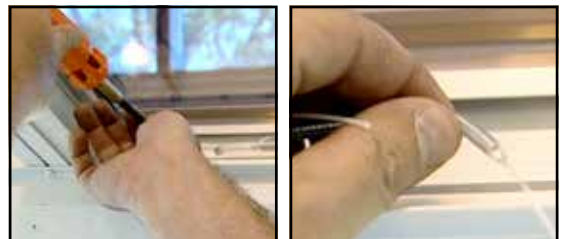


9.) Fasten the bottom rail into the sunroom with wood or metal screws.

➤ *Ensure bottom rail is centered within side tracks.*



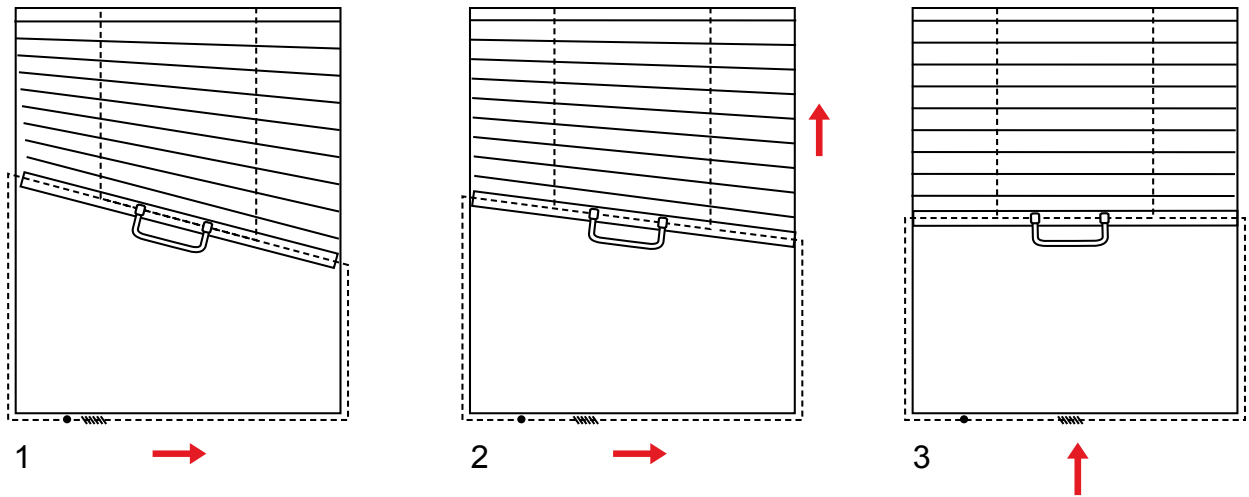
10.) Loosen slip knot. Pull string to apply slight tension on to spring. Spring should be stretched by about 1/2". Retie the knot.



11.) Back-off the set screw to allow adjustments to movable rail. Lower shade to ensure movable rail sits flat on bottom rail. Slowly lift shade handle while holding down cord with index and middle fingers. Double check movable rail so that it is parallel to bottom rail. Tension set screw.



12.) Double check the movable rail level.



13.) Prepare bottom filler strip to conceal bottom rail.



14.) Insert filler strip back into bottom rail to cover the internal hardware.



15.) Use detachable telescopic wand to operate shade.





# Conservatory Rectangle

## Trouble Shooting

	Problem	Solution
A	The shade does not raise and lower evenly.	<ul style="list-style-type: none"> <li>• Check the installation brackets. Make sure the shade fabric is not caught between the bracket tab and the headrail.</li> <li>• Adjust the cord tension (see step 11).</li> <li>• Check that the lift cords are not pinched or tangled.</li> </ul>
B	The shade headrail will not fit into the mounting brackets.	<ul style="list-style-type: none"> <li>• Make sure the mounting brackets are level. Loosen the tab screws slightly and in correct position (see step 4).</li> </ul>
C	Shade is too stiff to easily travel open or closed.	<ul style="list-style-type: none"> <li>• Reduce tension on spring.</li> </ul>
D	Shade is too loose and will not hold its upper position.	<ul style="list-style-type: none"> <li>• Add tension on spring.</li> </ul>

## Care and Cleaning

Honeycomb shades are made of an anti-static, dust-resistant fabric which repels dirt and dust. For most honeycomb fabrics, the following options are available if your shade needs cleaning.

### DUSTING

Regular light dusting with a feather duster is all the cleaning that is needed in most circumstances.

### VACUUMING

Use a hand-held vacuum with low suction for more thorough dust removal.

### SPOT-CLEANING

- Prepare a solution of warm water and a mild detergent.
- Dampen a clean cloth in the solution and wring it out.
- Dab the spot with the dampened cloth until it is gone. Do not rub the fabric.
- Allow the shade to dry in the completely lowered position.

### DEEP CLEANING

- Immerse the shade in a basin or bathtub filled with a mild detergent. Never immerse the headrail into the solution.
- Rinse with clean water.
- Fully raise the shade and tilt to eliminate excess water.
- Reinstall the damp shade, lower it, and let it dry completely.

### ULTRASONIC CLEANING

Some honeycomb fabrics can be ultrasonically cleaned by a professional.

- Specify that a mild detergent solution be used.
- Never immerse the headrail into the solution.
- Dry the shade completely in the lowered position.

[www.solarashade.com](http://www.solarashade.com)



---

[solarashade.com](http://solarashade.com) [info@solarashade.com](mailto:info@solarashade.com) 1-800-483-5550

---